

Coolant Hose Connection Diagram

1 - Radiator

- ❑ Removing and installing
→ Chapter
- ❑ Replace coolant after replacing

2 - Coolant line

3 - Intake manifold

4 - Coolant pump and coolant thermostat

- ❑ Coolant pump, removing and installing
→ Chapter
- ❑ Thermostat, removing and installing
→ Chapter
- ❑ Checking coolant regulator
→ Item

5 - Front coolant line

- ❑ Secured to bracket for assemblies

6 - Right coolant line

- ❑ Secured to engine mount

7 - Expansion tank

- ❑ With sealing cap
- ❑ Pressure relief valve in cap, checking → Anchor

8 - Rear coolant pipe

9 - Cylinder head/cylinder block

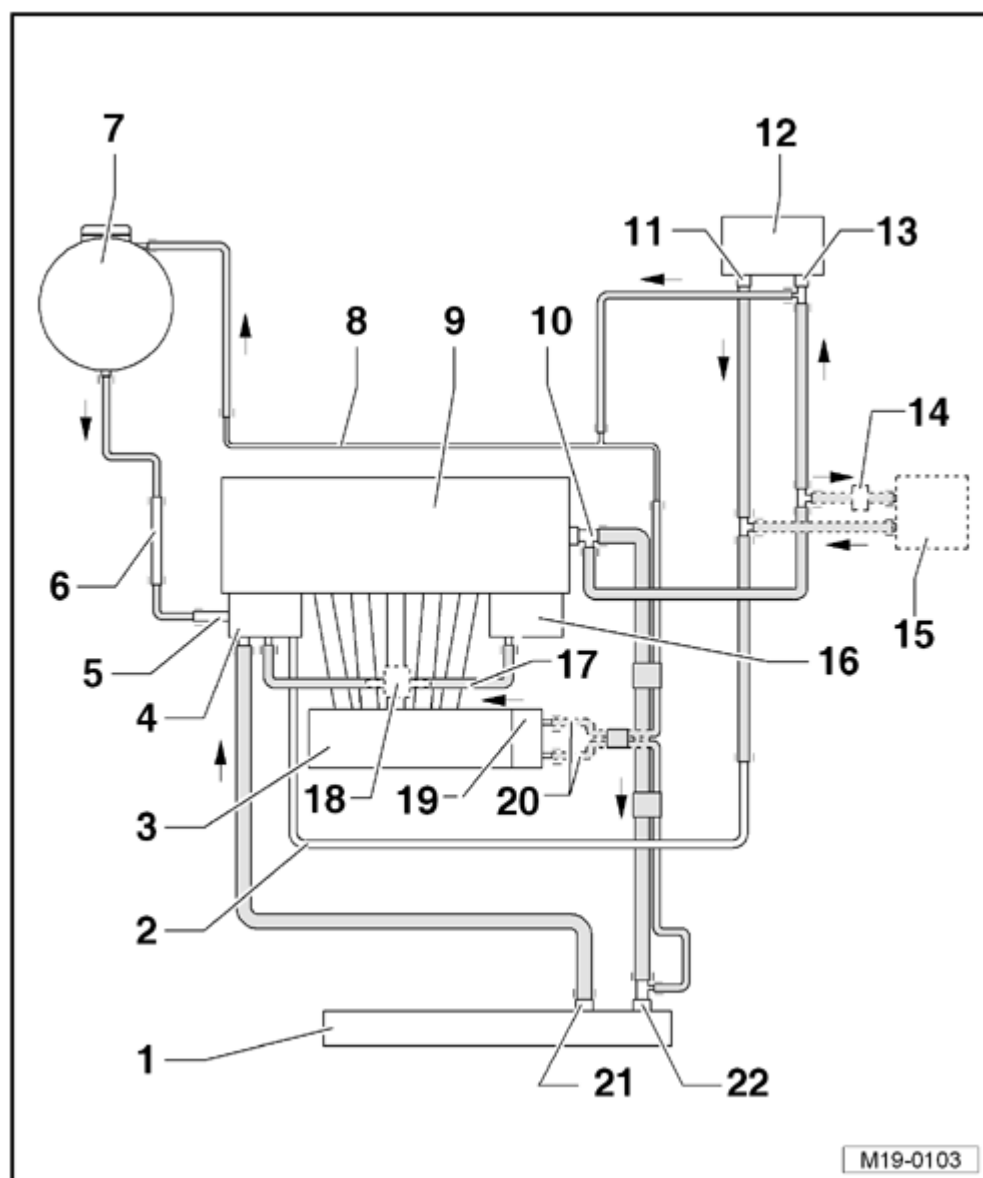
- ❑ Replace coolant after replacing

10 - Coolant distribution housing

11 - Quick-release coupling

- ❑ Lower connection

12 - Heater core of heater



- ❑ Replace coolant after replacing

13 - Quick-release coupling

- ❑ Upper connection

14 - Bypass Thermostat

- ❑ Only for vehicles with automatic transmission
- ❑ Assembly overview → [Fig.](#)
- ❑ Checking → [Anchor](#)

15 - ATF cooler

- ❑ Only for vehicles with automatic transmission

16 - Oil cooler**17 - Coolant hose**

Two versions:

- ❑ Without engine pre-warming
- ❑ With engine pre-warming

18 - Pre-warming

- ❑ Only on vehicles with engine pre-warming

19 - Throttle valve control module -J338-

- ❑ Connection only for coolant heated throttle valve control module

20 - Coolant hoses

- ❑ Only for Throttle Valve Control Module -J338- heated by coolant

21 - Quick-release coupling

- ❑ Upper connection

22 - Quick-release coupling

- ❑ Lower connection